

WinKey v1.45 (C)

General

WinKey transports measuring data from different digital measuring instruments with a Mitutoyo-Interface into standard Windows-software like WORD or EXCEL without the need of using the keyboard.

Hardware-demands

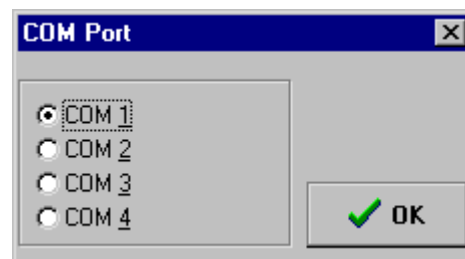
You need a IBM-compatible PC with a standard serial (COM) port, Windows 3.1 or later and a measuring instrument with Mitutoyo-Interface.
For the installation a 3.5" Floppy-drive is essential.

Installation

Just open your filemanager or explorer and look and double-click on the setup-file. Follow the instructions appearing on the screen.

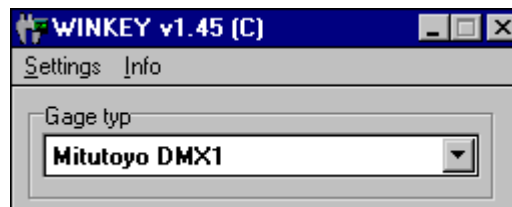
Starting WinKey

Double-clicking the icon starts WinKey. Starting the programm the first time, you are forced up to register your name and serial number. The number can be found on the installation-disk.
Then the following box appears:



Choose the COM-Port to which your measuring-instrument is connected and click the OK - button.
If no Port is present or all ports are busy, WinKey shows an error code.

The WinKey main-window appears:



In this window the connected measuring instrument can be chosen from the drop-down-list.
WinKey chooses the correct data-format depending on the measuring instrument.
If the choice is not correct, a transformation-error may occur.

The window can only be closed (and the programm aborted) by double-clicking th control-box in the top-left corner or by using the "close"-option in the menue.

With the help of the menue-item "**Settings**" you can open the following dialogue-windows:

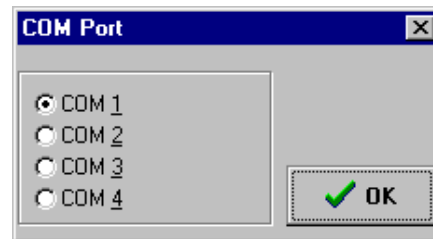
- COM Port
The desired COM-Port can be chosen here
- Data transmission
The Data-Transfer for the measuring instrument can be chosen here
- Factor
Here you can choose the factor which multiply the value
- Value
The information delivered with the measuring-data can be chosen here
- Cell-controll
Here you can choose when the next value in Excel
- Language
The desired Language can be chosen here
- stay on top
The WinKey main-window stays on top if this option is chosen

The menu-item "Info" shows an info-box :

- Info
- Details about WinKey

Settings

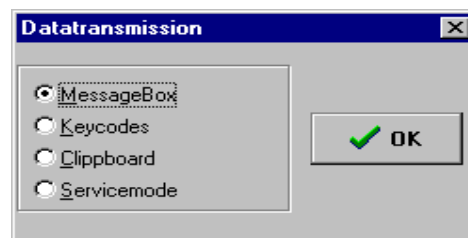
COM-Port



With this window you can choose the COM-Port to which the measuring instrument is connected. Altering the choice will be updated only after leaving the window.

Data transmission

WinKey offers three possibilities for Data transmission:



Message-Box

Die Message-Box is designed for the purpose of tests, while data-transfer, the actual measuring-data is displayed in a message-box.

Key-Codes

This possibility generates a keyboard-code. On the actual cursor-position appears the measuring-data, like it has been put by keyboard. This is the smartest solution for use with EXCEL or WORD for example.

Clipboard

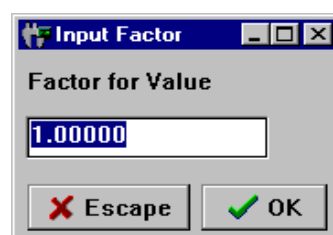
Measuring data can be copied into the Clipboard. The Clipboard always contains the last data. Measuring data can be pasted into any windows-application by this.

Servicemode

Die Servicemode is designed for the purpose of tests.

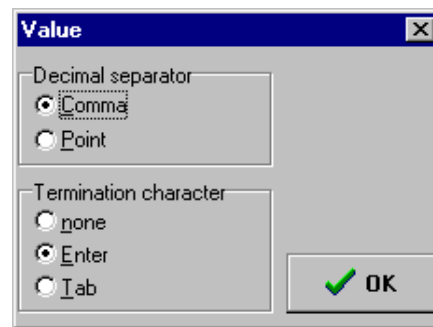
Factor

Here you can choose the factor which multiply the value.



Value

This menu item opens a dialog box in which you can change the appearance of the measured value.



Decimal Separator

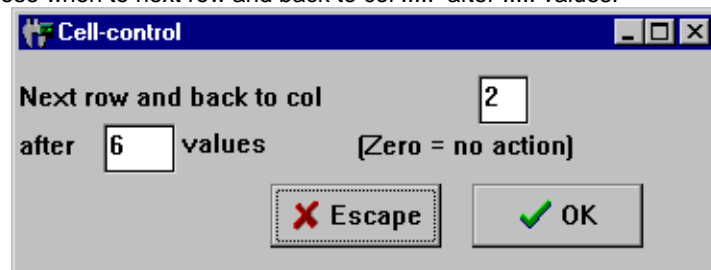
Here you can choose the character which separates the fraction from the measured value.

Termination Character

This Option determines which Key-Character is transmitted after the value.

Cell-control

Here you can choose when to next row and back to col after values.



Language

Here you can choose the Language.



stay on top

If this option is chosen, the WinKey main window always stays in the foreground of the screen. No other window can cover the WinKey main window.

Info

about WinKey

Info

Program	WinKey
Version	1.45
Date	37/99

Name	
Serial Nr.	

Mitutoyo
Mitutoyo Meßgeräte GmbH
Borsigstraße 8-10
D-41469 Neuss

 OK

Here you can find the software-version of WinKey and your registration data.